

# Working Example

ID	Info	Item Text	Inherent Impact	Inherent Likelihood	Control Measures
A		Publication of sensitive information			

**List Item editor** ✕

List display text: 🔍  
 Publication of sensitive information

Notes/comments: 🔍  
 Private Information about our customers

Control Measures 🔍

Short Description Text: 🔍  
 Information in laptops or documents being made public

Risk Owner  
 Katy ▼

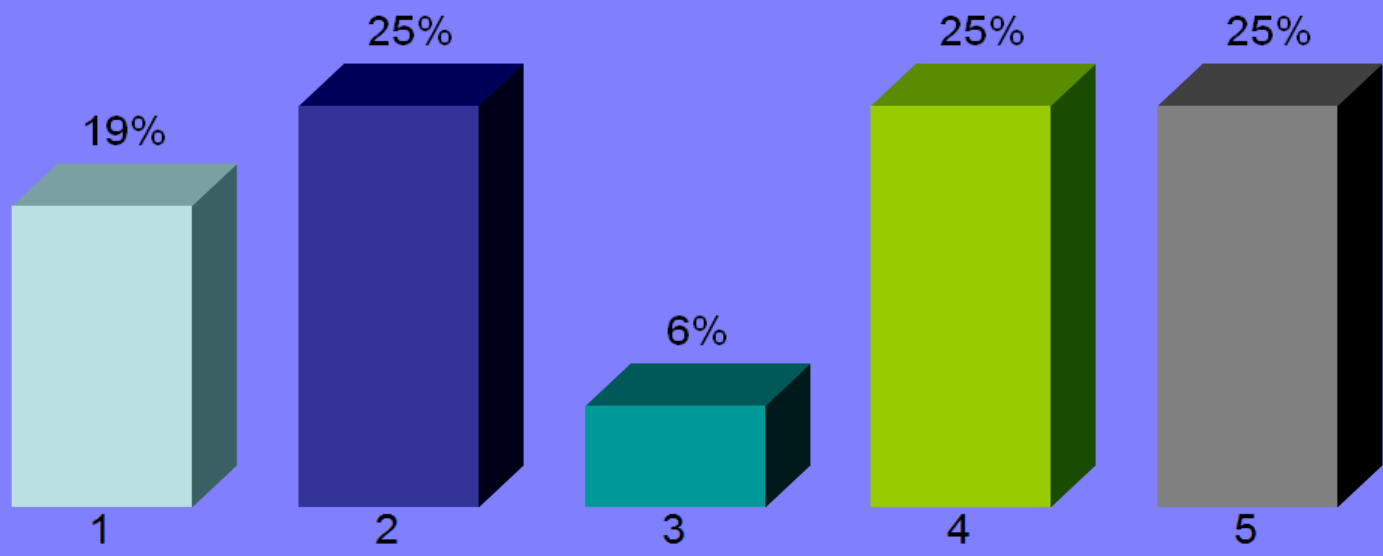
ALT+z to zoom in on text

Average: 3.13  
Standard Deviation: 1.44  
Diversity: 71.8%  
Participants: 16

# Publication of sensitive information

## Inherent Impact

- 1. Insignificant
- 2. Minor
- 3. Moderate
- 4. Major
- 5. Catastrophic

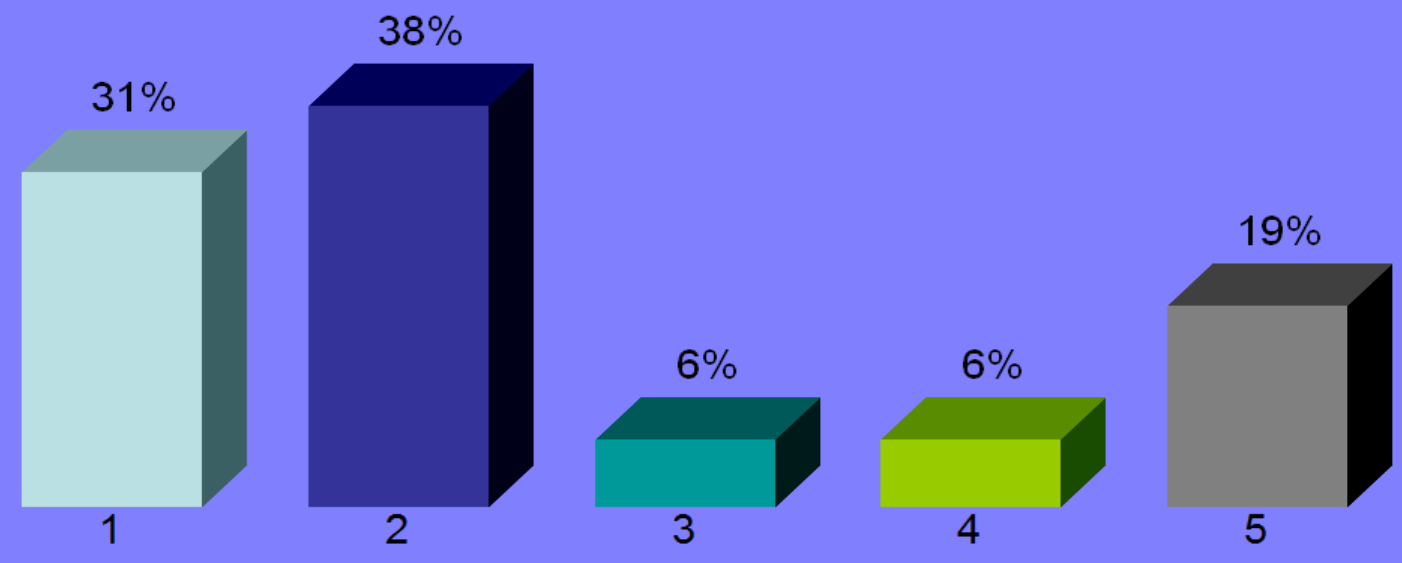


Average: 2.44  
Standard Deviation: 1.34  
Diversity: 67%  
Participants: 16

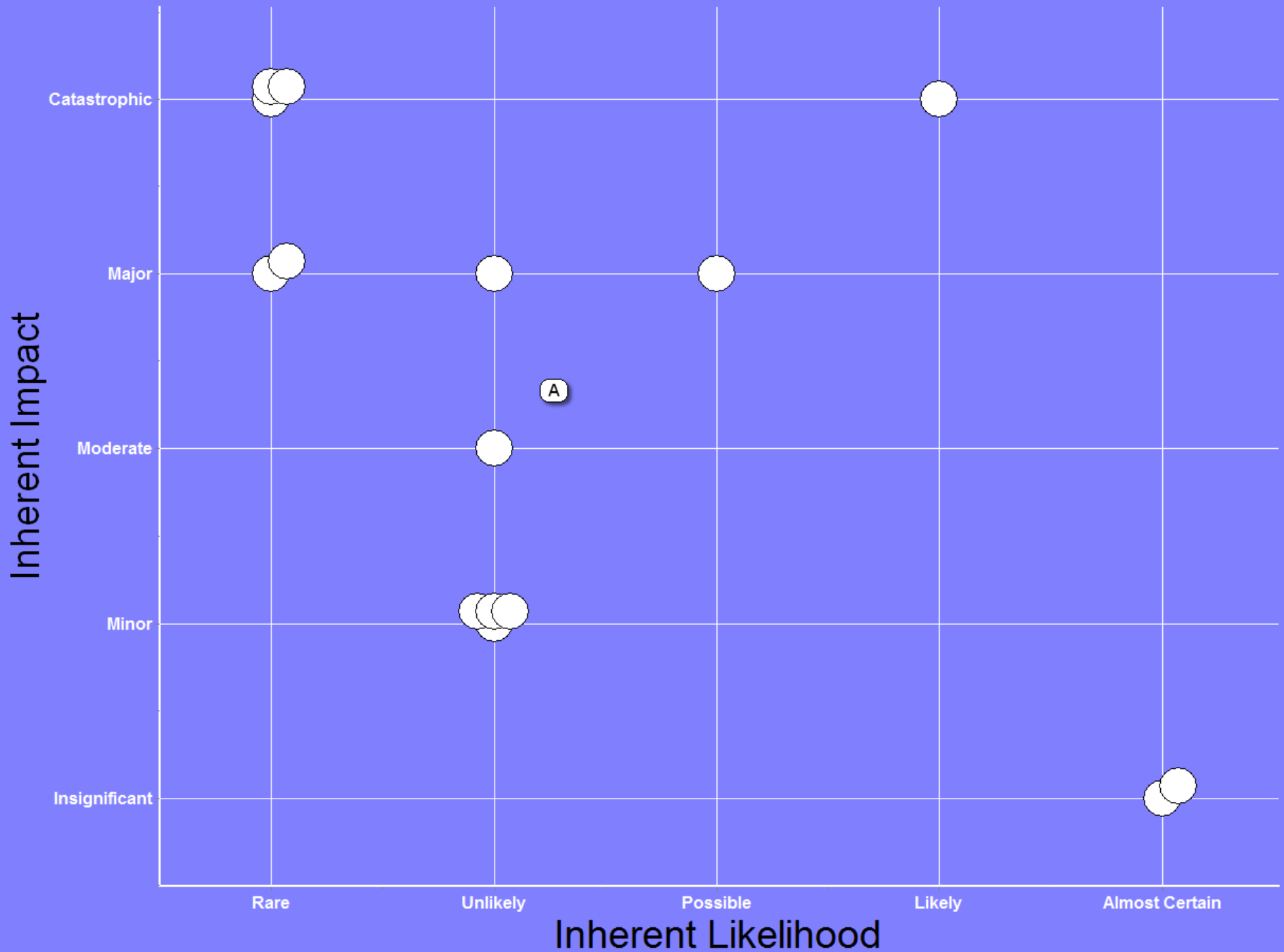
# Publication of sensitive information

## Inherent Likelihood

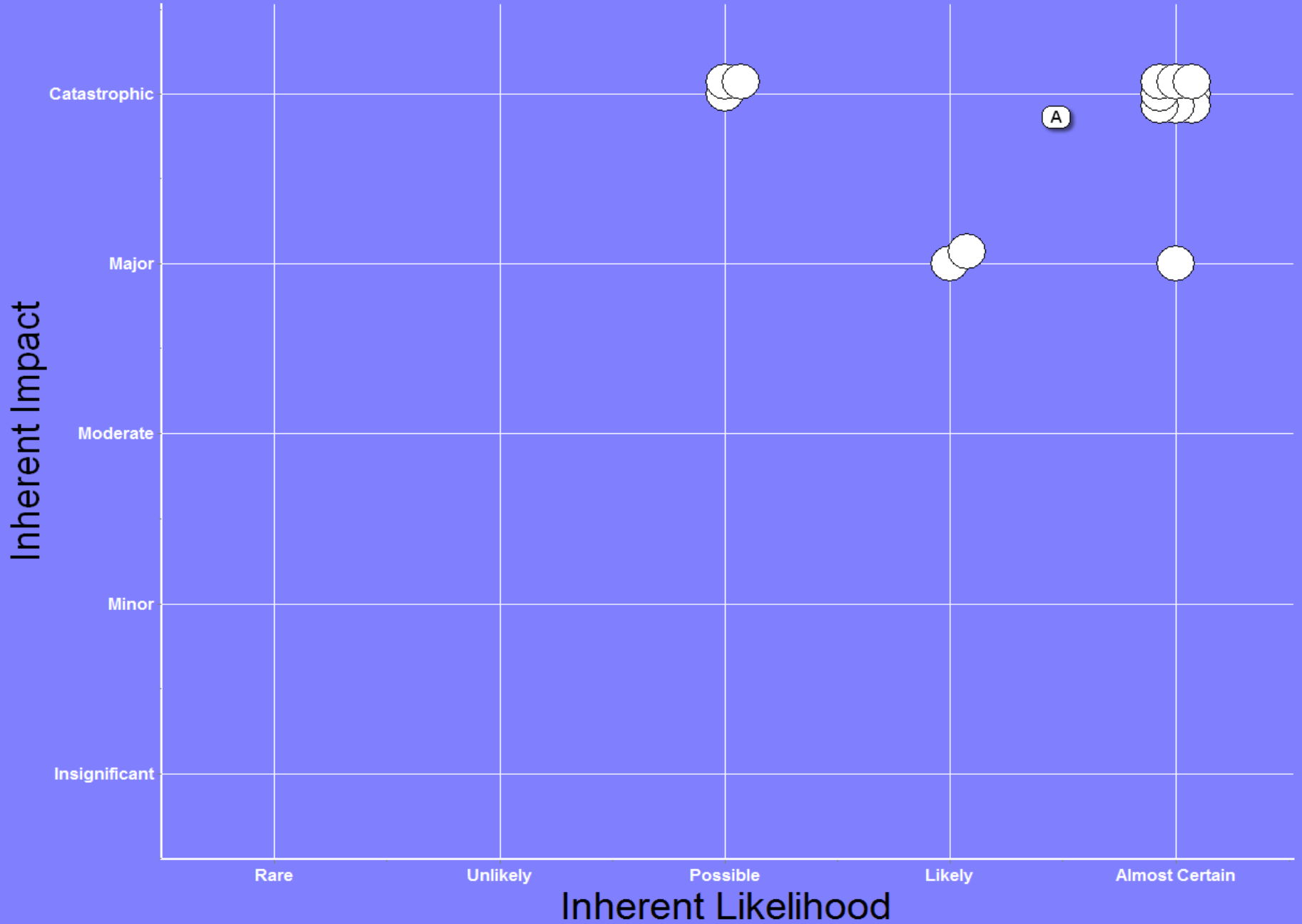
- 1. Rare
- 2. Unlikely
- 3. Possible
- 4. Likely
- 5. Almost Certain



A: Publication of sensitive information

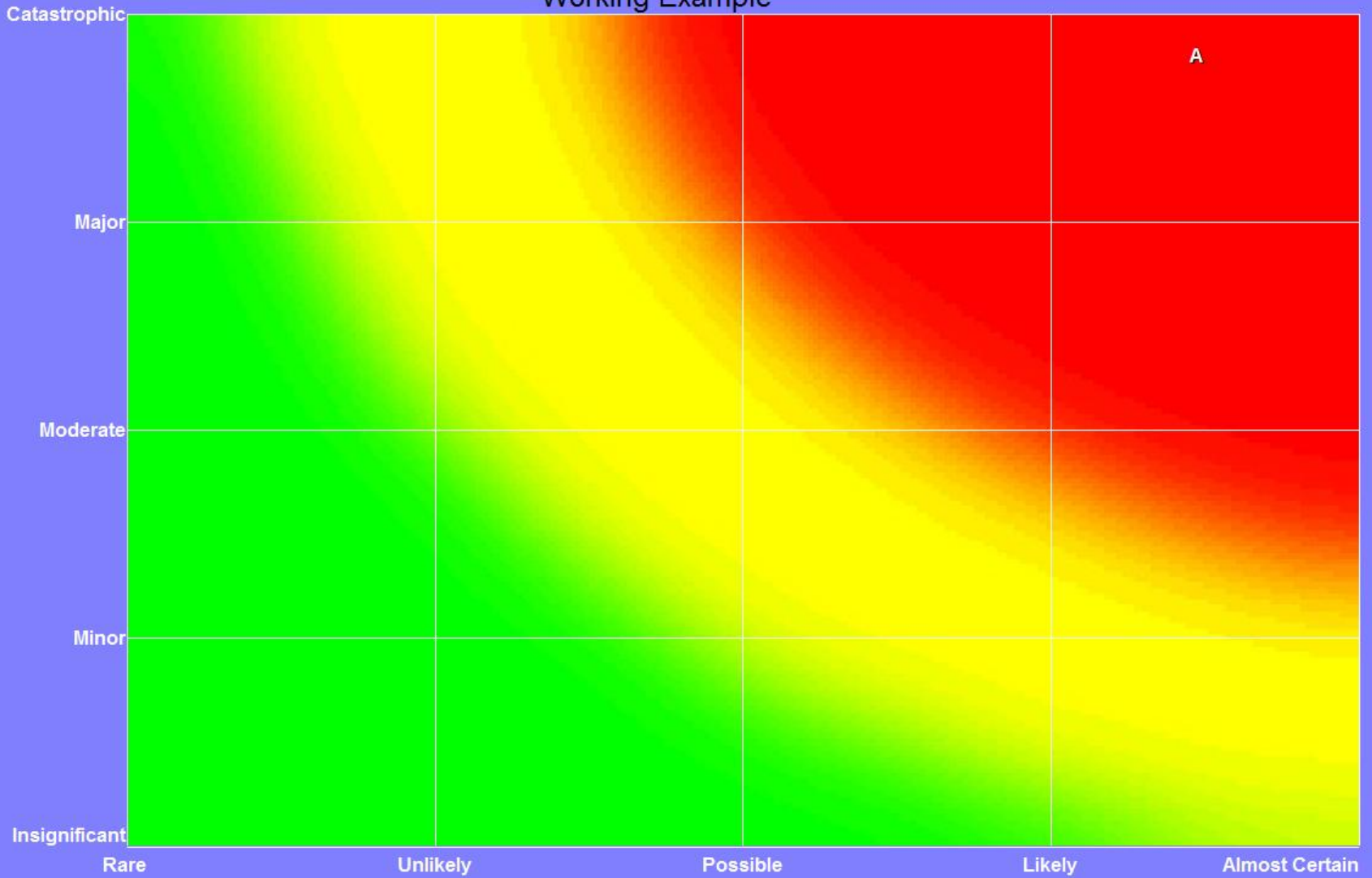


A: Publication of sensitive information



# Working Example

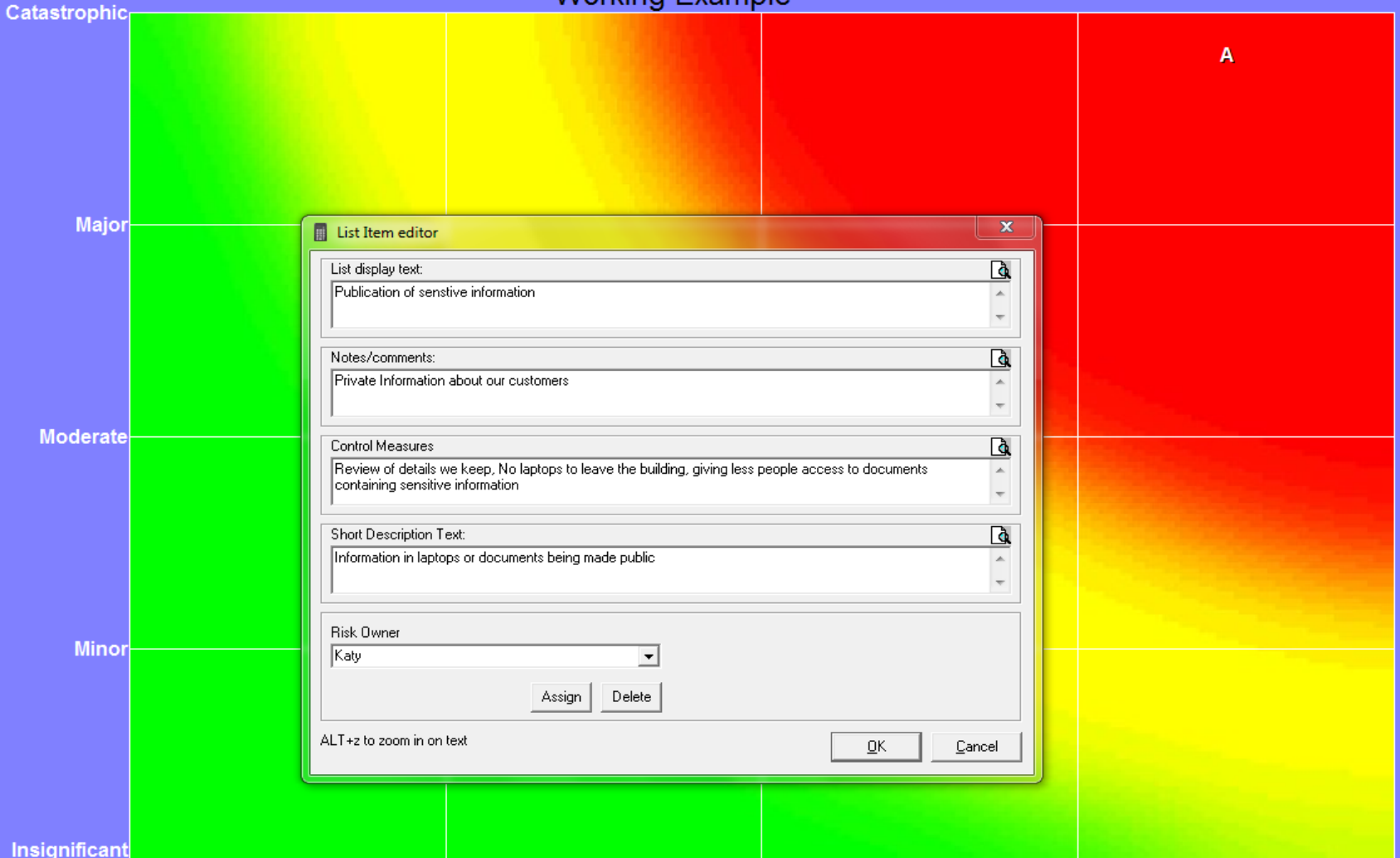
Inherent Impact



Inherent Likelihood

# Working Example

Inherent Impact



**List Item editor** [X]

List display text: [Publication of sensitive information]

Notes/comments: [Private Information about our customers]

Control Measures: [Review of details we keep, No laptops to leave the building, giving less people access to documents containing sensitive information]

Short Description Text: [Information in laptops or documents being made public]

Risk Owner: [Katy]

[Assign] [Delete]

ALT+z to zoom in on text [OK] [Cancel]

List items plotted [List Editor] [X]

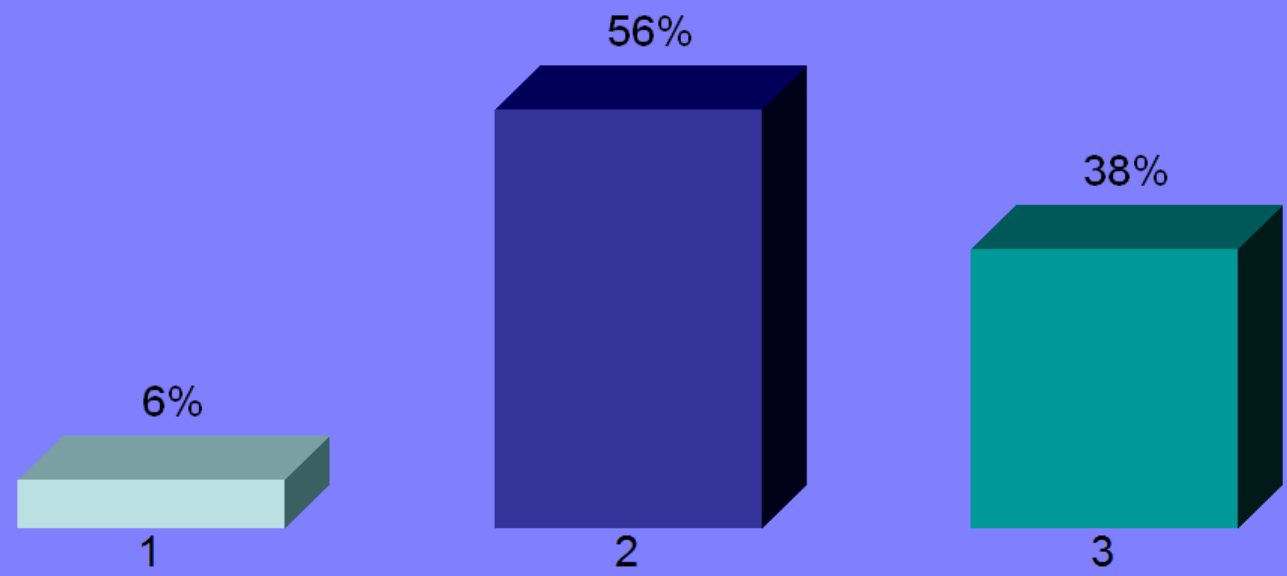
A: Publication of sensitive information*
--

Average: 2.31  
Standard Deviation: 0.49  
Diversity: 48.99%  
Participants: 16

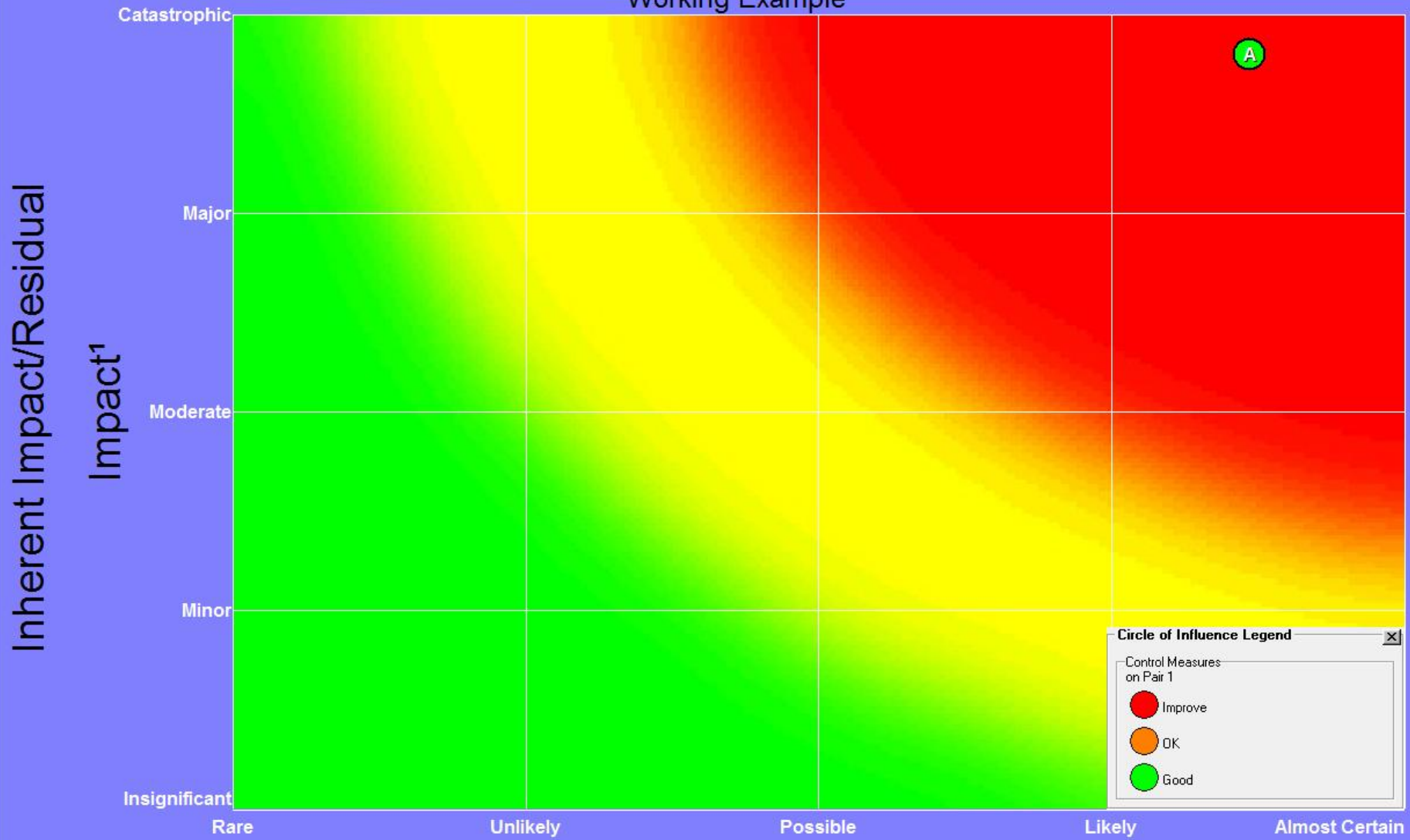
# Publication of sensitive information

## Control Measures

- 1. Ineffective
- 2. Partially Effective
- 3. Effective



# Working Example



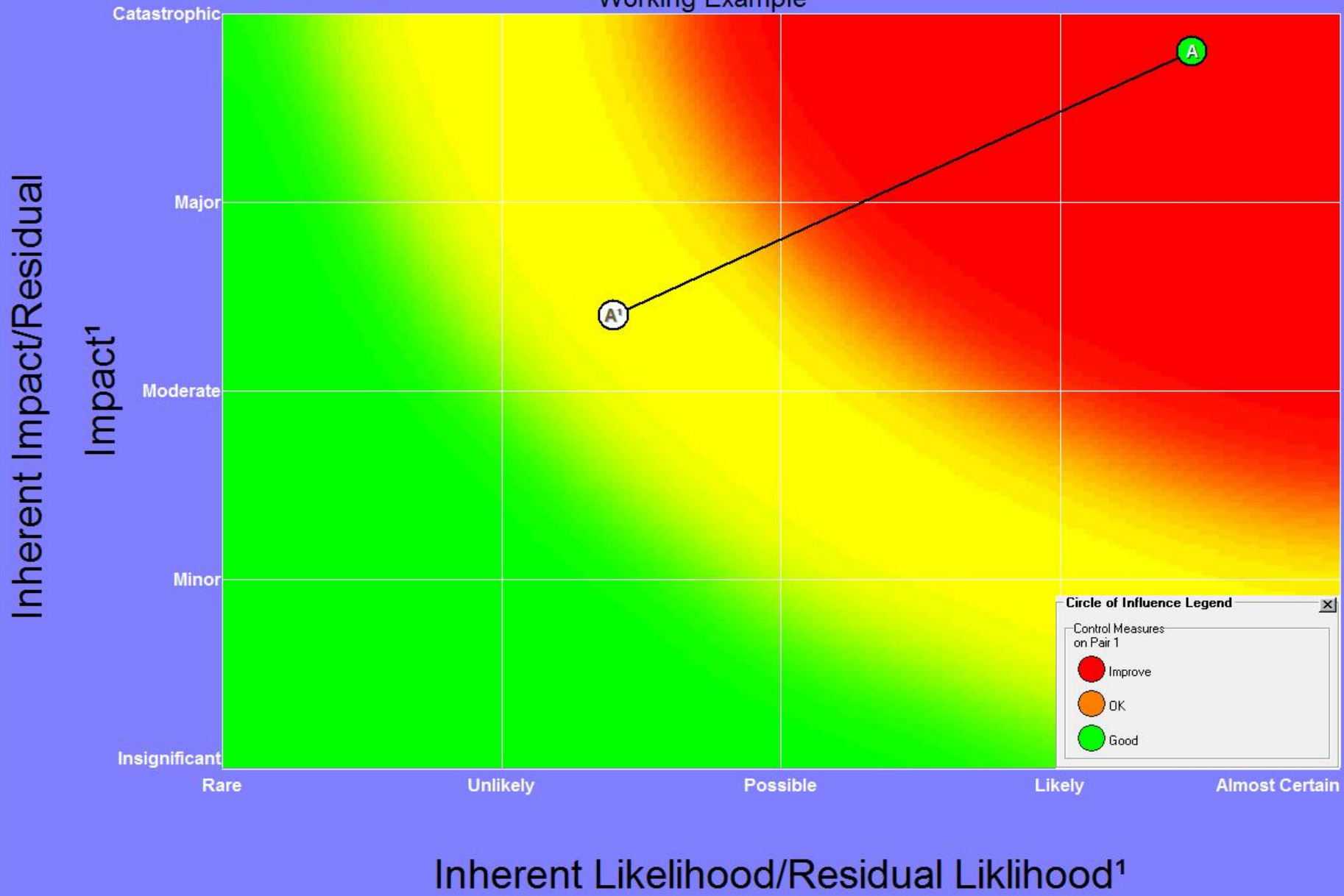
**Circle of Influence Legend**

Control Measures on Pair 1

- Improve
- OK
- Good

Inherent Likelihood/Residual Likelihood<sup>1</sup>

# Working Example



**Circle of Influence Legend**

Control Measures on Pair 1

- Improve
- OK
- Good

# Working Example

ID	Info	Inherent	Inherent	Control	Residual	Residual
A	Publication of sensitive information					

Item Text

ppvot matrix print manager

This is the main title

This is the subtitle

ppvot matrix print manager

Publication of sensitive information

Publication of sensitive information

Publication of sensitive information

Publication of sensitive information

For the selected image

←
↑
→
↓

Zoom

Text Options

Included images: 9, rejected images: 8

Sifter Distribution Average Scattergraph Matrix

Print

Web Export

RIF Export

Close